

RainPortal™

SkyEcho Data Visualization Platform

Version

2.1 | 2024

Owner

SkyEcho BV

Key Features

- Multiple weather sensor data integration
- 1D and 2D modular data visualization interface
- Intuitive control bar for data selection, information and settings
- Data animation control bar
- Calendar view
- Weather warning based on data threshold implementation
- Adaptable design for specific client's integration
- Dynamic RainPortal adaption based on user & user groups
- Configuration API controls RainPortal appearance
- Powerful meteorological data backend
- Continuous development and code base maintenance

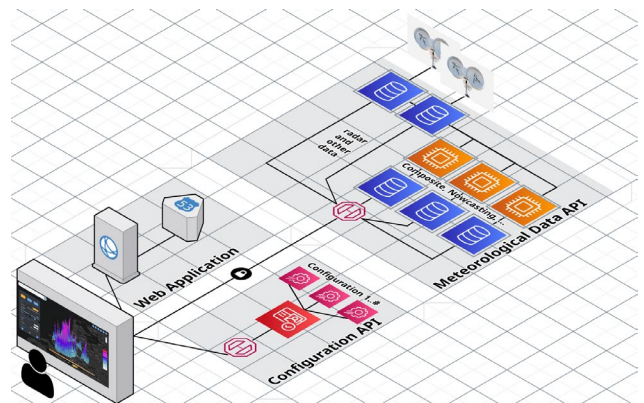


RainPortal is SkyEcho's powerful and intuitive weather sensor visualization platform dedicated for the historical and real-time support of weather-sensitive operations at local and regional scales.

RainPortal is developed with careful high adaptability and performance in mind, in order to guarantee its smooth integration within our client's applications and for their requirements.

The RainPortal includes visualization, search, and threshold warning features for the centralized and harmonized management of multi weather sensor data.

High-level RainPortal architecture:



The Rainportal can be deployed in highly scalable cloud-based as well as on-premises IT environments.

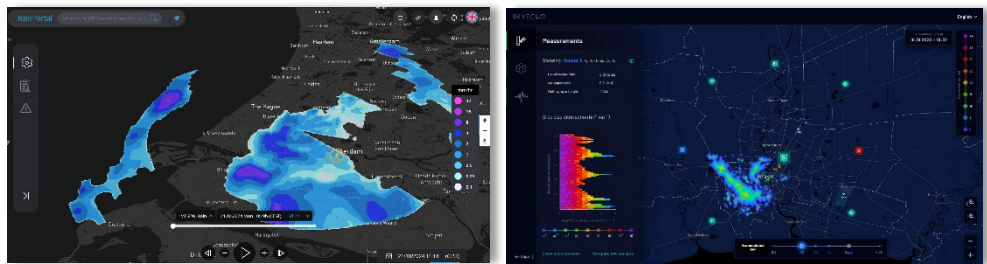


Service Features

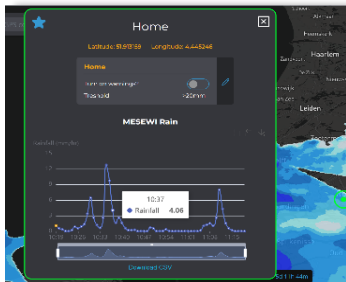
MAP INTERFACE

The data visualization is designed for intuitive usage and comes with different display modes adapted to Client's requirements.

2D maps : Interactive for extra local information | zoom in and out | animation toolbar | multi-layer selection

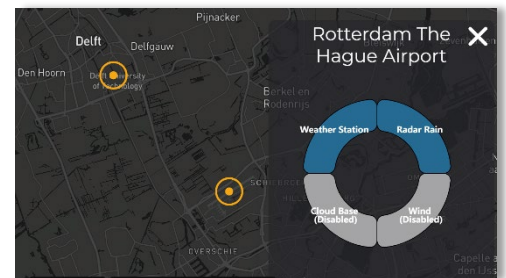


1D graph : Clickable | multi-layer selection | adaptable for height profiles or other 1D graphs visualization



POINT OF INTEREST / FAVOURITE LOCATION

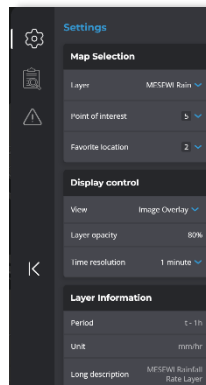
- Favorite location(s) provide 1D information(time series or height profiles) for the type of data selected
- Point(s) of interest display multi-1D parameter information at the chosen location



OPERATION TOOLBARS

Map setting:

- Data layer selection
- Saved location
- Resolution
- Data information
- Map transparency
- Warnings



Calendar view:

For archive data selection

SERVICES AVAILABLE

- Technical Support
- In-house weather sensor expertise
- Installation and Setup
- Maintenance
- Application Support
- Guaranteed Warranty



Mozartstraat 53,
7582ET Losser
The Netherlands
Phone +31(0) 108080235
Email : info@skv-echo.eu

Online access

<https://rainportal.sky-echo.eu/>
(password required)

System requirement

Available online or on-premise

Browser compatibility

RainPortal has been tested on the following browsers: Chrome, Firefox, Safari.

For more information

visit us on the Web at:

www.sky-echo.eu

For offer request, you can contact us at

info@sky-echo.eu